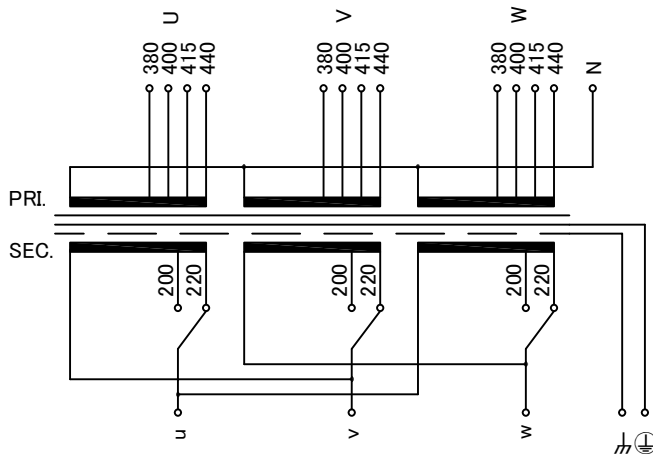
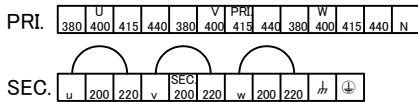


回路図  
Circuit Diagram

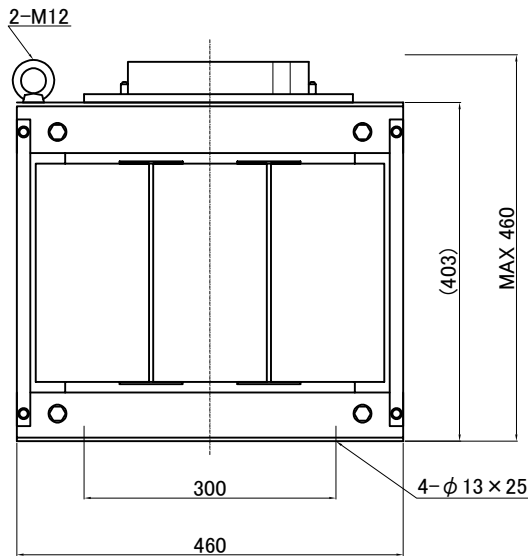
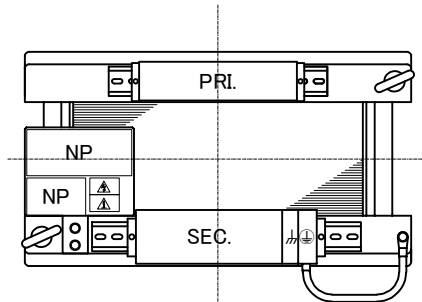


端子台配列 Terminal arrangement



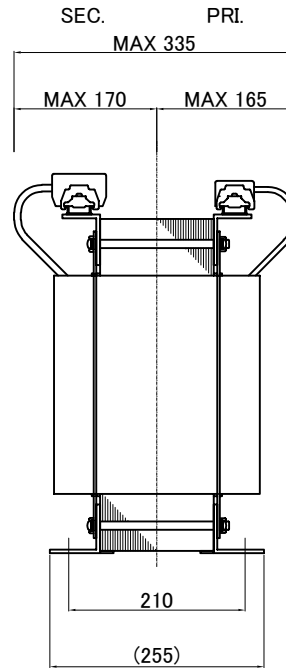
端子台 Terminal (締付トルク Tightening Torque)

- PRI. PT-80 13P M5 (2.0~3.0N・m)
- SEC. PT-90 9P M6 (2.5~3.7N・m)
- かⓍ PT-90 2P M6 (2.5~3.7N・m)



仕様  
Specification

|  |   |                  |                     |
|--|---|------------------|---------------------|
| 定格<br>Rating                                     | 連続<br>Cont.   | 結線<br>Connection | $\Delta$ - $\Delta$ |
| 容量<br>Capacity                                   | 20.8 kVA  |                  |                     |
| 相数<br>Phase                                      | 3~  | 周波数<br>Frequency | 50/60Hz             |
| 1次電圧<br>Primary Volt.                            | 380/400/415/440V  |                  |                     |
| 2次電圧<br>Secondary Volt.                          | 200/220V  |                  |                     |
| 2次電流<br>Secondary Curr.                          | 60/54.6A  |                  |                     |
| 絶縁抵抗<br>Insulation Resistance                    | P-E P-S S-E 100MΩ Min. at DC500V  |                  |                     |
| 絶縁耐圧<br>Dielectric Withstand Volt.               | P-E AC 60Hz 4.0kV / 1min.   |                  |                     |
|  | P-S AC 60Hz 5.0kV / 1min.   |                  |                     |
|  | S-E AC 60Hz 2.5kV / 1min.   |                  |                     |
| トランス質量<br>Transformer Mass                       | 160kg   |                  |                     |
| 絶縁種別<br>Insulation Class                         | Class 180(H)  |                  |                     |
| 定格周囲温度<br>Ambient Temp.                          | 40°C  |                  |                     |
| 適用規格<br>Standard                                 | UL1561<br>C22.2 No. 47-M90<br>EN61558-1, EN61558-2-4<br>IEC61558-1, IEC61558-2-4<br>BS EN IEC 63000 |                  |                     |
| ULファイルNo.<br>UL File No.                         | E258403   |                  |                     |
| EN, IECマーク<br>EN, IEC Mark                       | Non short circuit proof<br>isolating transformer  |                  |                     |
| 推奨保護装置定格<br>Recommended protection device rating | Pri. Circuit Breaker 60A<br>Sec. Circuit Breaker 60A<br>(IEC60947-2 or IEC60934)                    |                  |                     |



質量は標準仕様の値を記入しており、実測値と異なる場合があります。

|                |   |             |                  |              |   |             |                  |
|----------------|---|-------------|------------------|--------------|---|-------------|------------------|
| 訂正者<br>Drawn   | 訂正事項<br>Comment                             | 訂正日<br>Date | 訂正記号<br>Rev. No. | 訂正者<br>Drawn | 訂正事項<br>Comment                                     | 訂正日<br>Date | 訂正記号<br>Rev. No. |
| N. Takebayashi | Rewrite drawing                             | 21.07.01    |                  | N. Marukai   | Rewrite drawing                                     | 21.07.01    |                  |
| N. Takebayashi | EN, IEC standard updated, BS standard added | 21.07.01    | 3                | N. Marukai   | EN, IEC standard updated                            | 13.01.25    | 1                |
|                |   |             |                  | N. Marukai   | Corrected the ambient temperature value (25°C→40°C) | 13.01.25    | 2                |
|                |   |             |                  | N. Marukai   |   | 19.04.16    | 3                |

IMAI ELECTRIC  
今井電機株式会社

設計 DESIGNED  
DATE 13.01.25  
DRAWN  
N. Marukai  
APPROVED  
S. Murakami

品名 DESCRIPTION  
Dry type Isolating Transformer  
尺度 SCALE 単位 UNIT  
mm  
表面処理 FINISH

摘要 REMARKS  
型名 MODEL  
IEH3-YDB0208S-843  
図番 DWG. NO.  
SYDB0208S843

改訂 Ver. 4