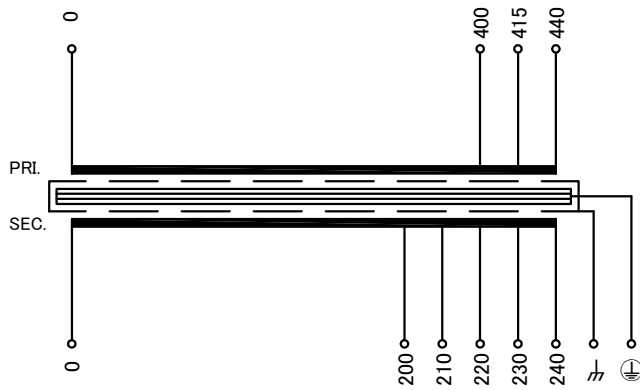


回路図
Circuit Diagram



端子台配列 Terminal arrangement

| | | | | | |
|------|---|---|-----|-----|-----|
| PRI. | P | 0 | 400 | 415 | 440 |
|------|---|---|-----|-----|-----|

| | | | | | | | | | |
|------|---|---|-----|-----|-----|-----|-----|---|---|
| SEC. | S | 0 | 200 | 210 | 220 | 230 | 240 | ⌚ | ⊕ |
|------|---|---|-----|-----|-----|-----|-----|---|---|

端子台 Terminal

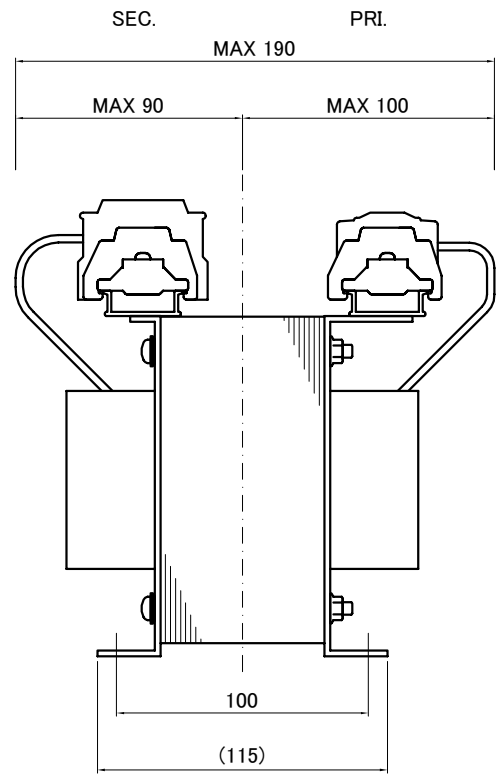
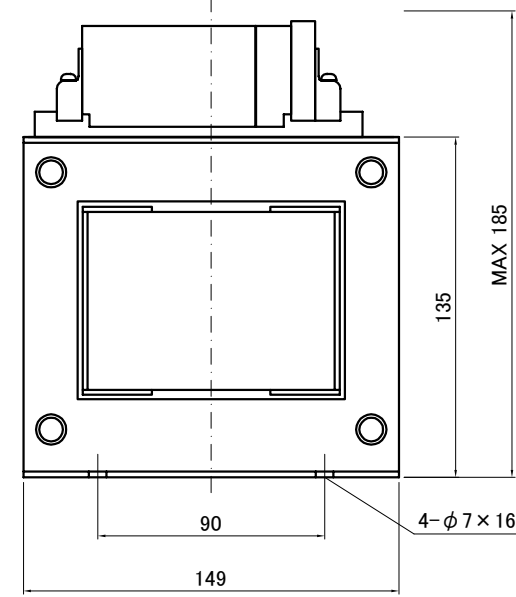
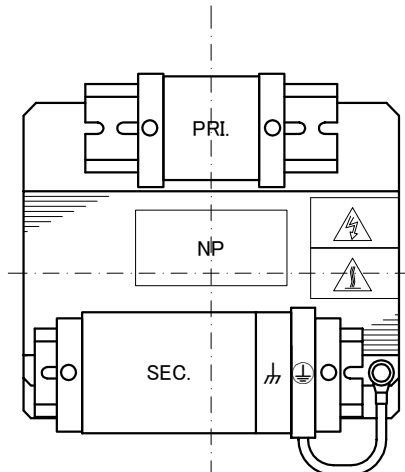
(締付トルク Tightening Torque)
 PRI. FPS-20 4P M3.5(0.8~1.4N・m)
 SEC. FPS-40 6P M4 (1.2~1.8N・m)
 ⌚ FPS-40 1P M4 (1.2~1.8N・m)
 ⊕ TFE20 1P M3.5(1.0~1.3N・m)

仕様

| | |
|--------------------------------------|--|
| Specification | |
| 定格 | 連続 |
| Rating | Cont. |
| 容量 | 500VA |
| Capacity | 500VA |
| 相数 | 1~ |
| Phase | 周波数 50/60Hz |
| Frequency | 50/60Hz |
| 1次電圧 | 400/415/440V |
| Primary Volt. | 400/415/440V |
| 2次電圧 | 200/210/220/230/240V |
| Secondary Volt. | 200/210/220/230/240V |
| 2次電流 | 2.5/2.38/2.27/2.17/2.08A |
| Secondary Curr. | 2.5/2.38/2.27/2.17/2.08A |
| 絶縁抵抗 | |
| Insulation Resistance | |
| P-E P-S S-E | 100MΩ Min. at DC500V |
| 絶縁耐圧 | |
| Dielectric Withstand Volt. | |
| P-E | AC 60Hz 4.0kV / 1min. |
| P-S | AC 60Hz 5.0kV / 1min. |
| S-E | AC 60Hz 2.5kV / 1min. |
| トランス質量 | 10.5kg |
| Transformer Mass | 10.5kg |
| 絶縁種別 | Class 130(B) |
| Insulation Class | Class 130(B) |
| 定格周囲温度 | 40°C |
| Ambient Temp. | 40°C |
| 適用規格 | UL5085-1, UL5085-2 |
| Standard | C22.2 EN61558-1, EN61558-2-4 IEC61558-1, IEC61558-2-4 BS EN IEC 63000 |
| ULファイルNo. | E219074 |
| UL File No. | E219074 |
| EN, IECマーク | Non short circuit proof isolating transformer |
| EN, IEC Mark | Non short circuit proof isolating transformer |
| 推奨保護装置定格 | |
| Recommended protection device rating | |
| | Pri. Circuit Breaker 3A |
| | Sec. Circuit Breaker 3A |
| | (IEC60947-2 or IEC60934) |



質量は標準仕様の値を記入しており、実測値と異なる場合もあります。



| | | | | | | | | | |
|----------------|--|-------------|------------------|------------|----------------|------------------|-------------|------------------|------------|
| 訂正者 Checked | 訂正事項 Comments | 訂正日 Date | 訂正記号 Rev. No. | 改訂 Ver. | 訂正者 Checked | 訂正事項 Comments | 訂正日 Date | 訂正記号 Rev. No. | 改訂 Ver. |
| | EN, IEC standard update, BS standard added | 21.07.01 | | 1 | N.Marukai | | | | |

IMAI ELECTRIC
今井電機株式会社

| | | | | |
|-------------|---------------|----------------|--------------------------------|-----------------|
| 設計 DESIGNED | DATE 19.07.01 | 品名 DESCRIPTION | Dry Type Isolating Transformer | |
| DRAWN | N.Marukai | 尺度 SCALE | 単位 UNIT | 型名 MODEL |
| APPROVED | M.Fujitaka | 表面処理 FINISH | mm | IEB1-B0500S-853 |
| | | | | 図番 DWG. NO. |

| | |
|------------|---------------|
| 摘要 REMARKS | |
| | SIEB1B0500853 |
| 改訂 Ver. | 1 |